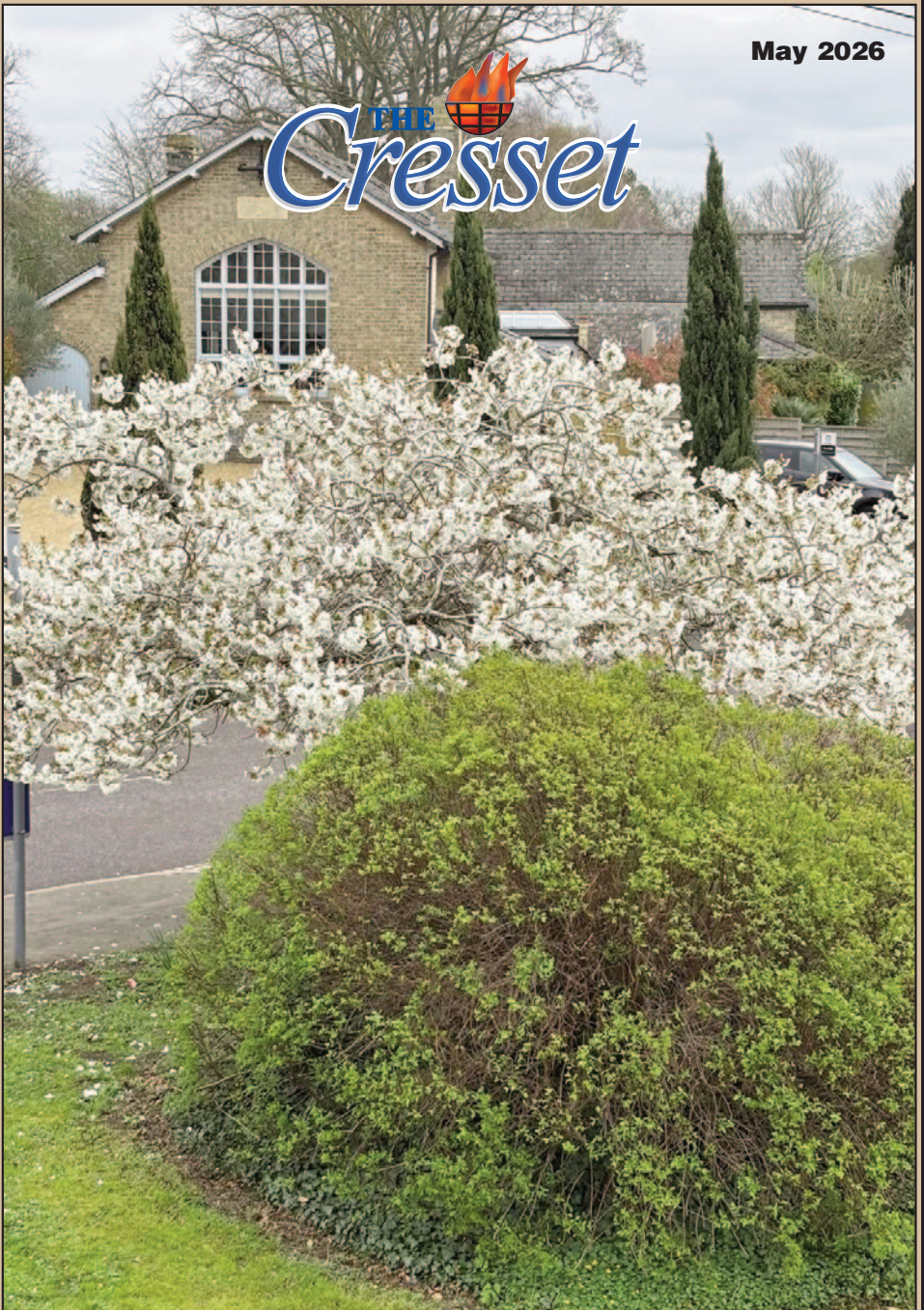


May 2026



**THE**  
*Cresset*



News, views and what's on, in and around Bottisham

# DUCK RACING

FUNDRAISER  
FOR  
BOTTISHAM  
BOWLING  
CLUB



6PM ON  
SATURDAY  
9TH MAY

AN EVENING OF FAMILY FUN  
INCLUDES RACES FOR CHILDREN  
TOTE FOR BETTING

COME ALONG AND GIVE IT A TRY!

BOTTISHAM COMMUNITY SPORTS & SOCIAL CLUB

Washed your face in the morning May dew yet? Where did that saying come from? Well according to 'AI', Washing one's face in the May dew is an ancient Celtic, Druidic, and European tradition rooted in the Pagan festival of Beltane, which marks the start of summer and celebrates fertility, life, and vitality. It was believed that dew collected on the morning of May 1st had magical, purifying properties, ensuring beauty, a clear complexion, and protection against illness or misfortune for the coming year.



Well, it's never worked for me!

Talking about AI, I'm not sure it need be the worry, they talk about. As long as at some point in any process there is a human decision involved then surely it can be managed. However I am no expert, just a guy who is always amazed how quickly Google can come up with the answer!

You will see in the magazine this month all the regular items and updates together with information of upcoming events.

The main one is early notice, (it will be in next month as well) and information about the **Bottisham Village Event**. Following on from its success last year it is being put on again on 6th June. A whole day of activities from exhibitions of village life in the Church to Morris Dancers, and Barbecues to Live bands. Most of the activities take place in and around the Sports and Social Club. The detail is positioned in the middle of the magazine in order that you can pull it out and keep it handy on the day. All credit to those involved in organising it.

Bird Brain gives yet another fascinating article on the subject of more of the family of Tits. Always an interesting and informative article.

Talking of birds, I am minded this year to follow the guidance about stopping feeding garden birds.

Research has shown a worrying decline in some of our much-loved garden birds due to a disease called trichomonosis. This is a highly contagious disease and can spread where birds gather in large numbers such as at bird feeders. Greenfinches and Sparrows are particularly affected.

### **These are the new May 2026 RSPB Feeding Guidelines**

- **Pause Feeding Seeds:** The RSPB recommends pausing the use of bird tables, feeders, and seed mixes from **May 1st to Oct 31st** to prevent feeders from becoming disease hotspots.
- **Safe Alternatives:** During this period, you can safely feed birds small amounts of fat balls or suet.
- **Clean and disinfect** feeders weekly, letting them dry thoroughly.
- **Change bird bath water daily.**
- **Remove** flat-surfaced feeders where contaminated food collects

We have another couple of Monday holidays this month and a school half term week in the last week. If you get the time to enjoy it, have a great month and let's hope the weather plays ball.

Finally, my thanks to Debbie Wilson for the cover picture of beautiful blossom in the High St.

*Your Editor*

## *News From Holy Trinity Church Bottisham*

We had a joyous Easter Sunday service with a large congregation, including children, who enjoyed chocolate Easter eggs and refreshments following the service, kindly provided by our service team. At our annual 'Vestry Meeting' held recently Louise Jacobs and I were re-elected as Churchwardens for 2026/7. We held our Annual Church meeting on April 15th when members of the Parochial Church Council (the governing body of our church) were re-elected and our annual accounts were approved.



We are looking forward to our 'Coffee & Cake Concert' with Cambridge Vocal Consort, a small vocal ensemble, which will take place on Saturday 2nd May at 10.30am. Another concert has been organised for Saturday 27th June when James Cheng, a year 10 pupil at the Perse School in Cambridge, who lives in Bottisham and is a highly talented organist, will give a short organ recital. More details of this will be published in the June Cresset.

With the cost of living is increasing at an alarming rate and energy prices rocketing please spare a thought for the church and our heating and lighting costs. We have been fortunate that for the past three years we have had a relatively competitive contract for our electricity costs. However, this is shortly coming to an end and we will have to negotiate a new contract in the near future. This will be much more costly than the present one.

As most of you will know our church is Grade 1 listed, parts of which date back to Norman Times. Much of the building was subsequently constructed with a stone called Clunch, which was at the time relatively cheap and mined locally. Unfortunately, this is relatively soft and porous and over the years has deteriorated and been repaired a number of times. However, the state of parts of the walls and windows, particularly on the south side of the church has deteriorated to such an extent that repair is now urgently needed. This will be extremely costly. We have started the preliminary work by commissioning an architect and a Land Surveying Company to produce detailed measured drawings of the south side of the church together with advice from suitable building companies regarding the exact mode and materials that will be required for repair. We will have to apply for various grants once these details are obtained. This project will take a significant amount of time and we will keep you updated with our progress.

The Peaceful and Prayerful Art Group, organised by Ruth Blundell, will be returning to Holy Trinity for the Summer months. They will now be meeting on Friday afternoons: May 1st, 8th, 15th and 22nd. No art experience is needed and all materials are supplied. Those of all faiths or none are welcome.

Our service pattern for May includes Holy Communion with the Baptism of Opal Tabor at 10.30am on Sunday 3rd May led by our vicar Max. This Baptism will follow a family tradition with six other members of the family having already been baptised in Holy Trinity and we are anticipating large numbers attending. Morning Prayer on 17th May will be led by Sarah Maxwell. Sarah will also lead the online C by C service at 8pm on Wednesday 6th May

You are very welcome to attend our services or those elsewhere in the Benefice which are listed later in the Cresset.

*Stuart Field, Churchwarden*

## Contents

Services in the Anglesey Benefice.....5	Bottisham Community Library Association .....23
Sales, Wants and Swaps.....5	Bottisham Airfield Museum Group (BAMG) .....25
Parish Council Report.....7 & 9	Anglesey Group Mothers' Union.....25
Cambridgeshire County Council Report .....9 & 11	Pull Out Spread.....27-30
District Councillors' Report.....13	Bottisham Bird Brain.....31 & 33
Charlotte Cane MP Reports .....15	Bottisham and District Gardening Club .....35
Planning Notes .....17	East Anglian Air Ambulance.....37
Letter to the Editor.....17	Red2Green.....39
Bottisham WI.....19	Village Litter Pick.....39
News from Bottisham Medical Practice Patients' Participation Group .....21 & 23	Cambridgeshire Fire & Rescue Service.....41

### HOLY TRINITY CHURCH BOTTISHAM



## COFFEE & CAKE CONCERT

**SATURDAY 2nd May 10.30AM**

### CAMBRIDGE VOCAL CONSORT

A small vocal ensemble performing music from the 16th and early 20th centuries, including madrigals, folk songs and lute songs.

**Come and enjoy a coffee (tea or juice), cake and then the concert which will last around 45 minutes**

Suggested donation £5, in aid of the church building fund – children free

## Reconnect to your life

Whatever your hearing difficulty, angli-EAR Hearing uses the most up-to-date tests and equipment to find the best solution for you.

Where to find us:  
Audiology House (Cambridge)  
15 Woollards Lane  
Great Shelford  
Cambridge  
CB22 5LZ



Book your  
**FREE**  
ear health  
check today

**Independent audiology  
experts you can trust**



Hearing  
Assessments



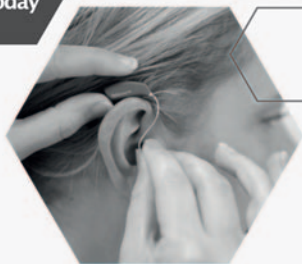
Ear Wax  
Removal



Hearing  
Aids



Tinnitus  
Solutions



**BOOK ONLINE**

[www.angliearhearing.co.uk](http://www.angliearhearing.co.uk)



**01223 661399**

[info@angliearhearing.co.uk](mailto:info@angliearhearing.co.uk)

## *Services in the Anglesey Benefice*

<b>Sun May 3rd</b>	<b>9am</b>	<b>Online service</b> on Zoom
	<b>10.30am</b>	<b>Holy Communion + Baptism</b> - Bottisham
<b>Wed May 6th</b>	<b>8 pm</b>	<b>C by C (a short contemplative service)</b> - online via Zoom
<b>Sun May 10th</b>	<b>9am</b>	<b>Online service</b> on Zoom
		<b>Holy Communion</b> - Quay
	<b>10.30am</b>	<b>Rogation Service</b> - Swaffham Prior
<b>Thurs May 14th</b>	<b>Ascension Day</b>	
	<b>10.30am</b>	<b>Holy Communion</b> - Lode
	<b>7.30 pm</b>	<b>Holy Communion</b> - Swaffham Prior
<b>Sun May 17th</b>	<b>Pentecost</b>	
	<b>9am</b>	<b>Online service</b> on Zoom
		<b>Morning Prayer</b> - Quay
	<b>10.30am</b>	<b>Holy Communion</b> - Swaffham Bulbeck
		<b>Morning Prayer</b> - Bottisham
<b>Sun May 24th</b>	<b>Trinity</b>	
<b>Sun</b>	<b>9am</b>	<b>Online service</b> on Zoom
		<b>Holy Communion (BCP)</b> - Swaffham Bulbeck
	<b>10.30am</b>	<b>Holy Communion</b> - Swaffham Prior
<b>Sun May 31st</b>	<b>9am</b>	<b>Online service</b> on Zoom
	<b>10.30am</b>	<b>Holy Communion</b> - Lode
	<b>6pm</b>	<b>Evensong</b> - Swaffham Prior
<b>Every Thurs</b>	<b>10.30am</b>	<b>Holy Communion</b> - Lode

---

Please check the Church notice board for any changes to these details; or email  
 admin@angleseygroupparishes.co.uk, which is also the address to request the Zoom link.  
 You are very welcome to attend any of these services.

## *Sales, Wants and Swaps*



IF YOU HAVE ANYTHING TO SELL OR WANT TO BUY OR EVEN TO SWAP, THEN THIS PAGE IS YOURS TO USE. Send details of Item, price and Phone Number to BottishamCresset@gmail.com. Max. 5 Items. Entries by 12th of the month for next months issue.

<b>DESCRIPTION</b>	<b>PRICE</b>	<b>TEL</b>
<b>Technics digital piano</b>	£100 ono	07845 988430

# SINGING & PIANO LESSONS



**Pauline Byrne**

A.R.C.M, G.G.S.M, A.B.S.M (Distinction)



**I am a Qualified ex. Opera Singer.**

*New to the area with many years teaching experience.*

Much success for pupils in competitions and A.B.R.S.M exams

Vacancies for all ages

**Please contact me on  
07930 561452**

## Tutor



Experienced tutor:

Fully qualified former primary school teacher and home educator based in Little Wilbraham

Expertise in:

Primary

Key Stage 3: Maths, English,

History & Geography

Study skills & revision techniques

For information and to arrange a free meeting/consultation contact:

Anne-Marie McCubbin BA(Hons) PGCE  
email: [info@wingstoflyeducation.co.uk](mailto:info@wingstoflyeducation.co.uk)  
tel: 01223 811939

## Derren Heath Electrical

Napit registered electrician based in Bottisham

All domestic and commercial electrical work undertaken.

Rewires, new builds and extensions.

New sockets.

New lighting.

Electrical safety condition reports.

Fault finding.

Electric vehicle charging points.

Replacing old fuse boxes.

Free quotes.

Tel: 07788911892

Email: [dhelectrical@hotmail.co.uk](mailto:dhelectrical@hotmail.co.uk)

Bottisham, Cambridge, Cambridgeshire.



# *Parish Council Report*

We hope all residents had a very enjoyable Easter and take this opportunity to wish everyone a pleasant May Bank Holiday. Please note that due to the Bank Holiday on Monday 4th May, the **next Full Council Meeting** has been moved and **will now be held on Tuesday 12th May 2026 at 7.30pm in the Poppy Room at Bottisham Sports and Social Club**. All Parish Council meetings are open to the public. Please note that the Clerk to the Council does not keep regular office hours. Replies to emails and telephone calls will be attended to as soon as practicable. Details of upcoming meetings and Councillor information are available on the Parish Council Noticeboard and via the website: **bottisham-pc.gov.uk**

**Council Administration** - The Parish Council is delighted to announce and welcome the co-option of a new member to the team. Robert Crida has attended many meetings over recent months to better understand the work of the Council, and his first official meeting will be at the Annual Meeting of the Parish Council on 12th May. Despite this addition, there are still vacancies on the Council, and we encourage any residents interested in becoming a Parish Councillor to get in touch to find out more.

The Parish Council has now concluded the 2025–2026 financial year. The Internal Audit has been completed and documentation submitted to the External Auditor for review.

The period of public rights will run from 3rd June to 14th July 2026. During this time, electors have the opportunity to inspect the accounts and ask questions about the Council's financial activities. Anyone wishing to do so should contact the Clerk to arrange an appointment.

We would also like to remind residents that the new bin collection service will take effect from 1st June 2026. New black bins and food caddies will be delivered to each property, along with guidance on their use. Further information is available on the East Cambridgeshire District Council website.

**Annual Parish Meeting** - The Parish Council held its Annual Parish Meeting on 14th April 2026 at Bottisham Sports and Social Club. We would like to thank all residents who took the time to attend. The meeting provides us with valuable feedback on the issues that matter most to the community. Please remember that the Parish Council is available all year round, and residents are always welcome to raise matters for consideration at any time.

**New Defibrillator** - By the time you read this, the new defibrillator and cabinet should be installed at Bottisham Sports and Social Club. The Parish Council is also exploring the possibility of arranging training sessions for residents on how to use a defibrillator. While emergency services can guide you through the process over the phone, many people feel more confident having received prior training. Training may be arranged through organisations such as the East Anglian Air Ambulance. If you are interested in attending a session, please contact the Clerk so that suitable arrangements can be made.

*Continued on page 9*

# D.S. FREEMAN

## Painters & Decorators

- Residential & Commercial
- Interior & External
- Fully Insured
- All Aspects Undertaken

duncanfreeman@hotmail.co.uk

**Tel: 07960 769176**

Longmeadow

## Morgan's Hairdressers

01223 811646



30 years Experience

Styling for all the family

Including perming

And colouring

Specialist Colours

Opening hours are:

Tuesday to Friday 9 am to 5 pm (weds late opening to 8 pm)



**E.J. DENSTON CARPENTRY**  
Kitchens & Construction

- Carpentry & Joinery
- Kitchen Projects
- Renovations & Construction



Tel: 01223 813279

Mobile: 07711578687

[www.eddenstoncarpentry.com](http://www.eddenstoncarpentry.com)

[eddenstoncarpentry@gmail.com](mailto:eddenstoncarpentry@gmail.com)

## Carpentry Services

# TONY MARTIN

Over 30 years experience

***Any carpentry jobs  
undertaken – BIG or small***

Call Tony  
for a free estimate

**Tel: 01223 812786**

**(Bottisham)**

**Mobile: 07767475987**

*Continued from page 7*

**Highways and Transport** - The Parish Council has begun an exciting new road safety initiative, inspired by a letter from a young resident of Bell Road.

We are working in partnership with Bottisham Primary School to create posters designed by children, encouraging motorists to be mindful of their speed when travelling through the village. Advice has been sought from the Highways Safety Group, East Cambridgeshire District Council, the Police, and other parishes already running similar schemes. Experience shows that children's artwork can be more effective at influencing driver behaviour than standard signage. Once the project is complete, selected designs will be turned into signs for display around the village. The initiative will also include school visits and activities to reinforce road safety messages. Children aged 11 and under who do not attend Bottisham Primary School are also very welcome to take part by submitting posters directly to the Parish Council. Please contact the Clerk for details.

If you need further information about anything raised in this report, or wish to bring a matter to the attention of the Parish Council, please contact:

*Sam Chambers-Turner*

*Clerk to the Council. Email: [clerk@bottisham-pc.gov.uk](mailto:clerk@bottisham-pc.gov.uk) Phone: 07369 248998*

---

---

## ***Cambridgeshire County Council Report***

---

---

In a time of international concern, I want to start this month by concentrating on those needing additional help.

**HELP WITH OIL AND HEATING COSTS** - The council has received £708,000 from the Government which is ring-fenced to support households struggling with the cost of domestic oil heating. The money has been added to the council's Crisis & Resilience Fund, and applications are being administered by the Cambridgeshire Community Foundation.

Applications to the fund opened on Monday 30 March. The link to apply is at <https://www.cambridgeshire.gov.uk/council/communities/support-with-the-cost-of-living/crisis-payment>

This fund is intended for Cambridgeshire households on low incomes who are reliant on heating oil and who need to top up their tanks as a matter of urgency. To receive this support, applicants must meet all the following criteria:

- Live in Cambridgeshire.
- Be reliant on heating oil to heat their home and/or water.
- Have 150 litres or less of oil remaining at the time of application.
- Be in receipt of or eligible for one of the following means-tested benefits:
  - Universal Credit
  - Pension Credit
  - Income based Employment and Support Allowance (ESA)

If funding allows, the council hopes to expand the scheme later to households on incomes just above the threshold for means-tested benefits, or with exceptionally high energy needs.

*Continued on page 11*



# Are You Paying Too Much For Your Medical Insurance?

## Independent And FREE Advice

- **Switch to an alternative scheme** – If you are currently insured, switching to a competitor can mean ***substantially lower rates***
- **Pre-existing conditions covered** – It is often possible to include pre-existing medical conditions currently covered by your existing provider
- **Improve your coverage** – We can frequently improve your cover whilst also lowering the cost of your premium
- **Complexities of different schemes** – In many cases, people are over insured – we can ensure you are covered with a scheme that meets your individual needs and requirements
- **Full cover for cancer treatment** – Many policies do not cover cancer in full – we are able to advise on your current level of coverage



For further information, please call Simon Lively at  
M&L Healthcare Solutions -

**FREEPHONE 0800 145 5838 or 07710 993990**

Email: [simon.lively@mlhs.co.uk](mailto:simon.lively@mlhs.co.uk)

quoting ref: **The Cresset**

M&L Healthcare Solutions Ltd is authorised and regulated by the Financial Conduct Authority. (FCA Reference number 943748)

**Continued from page 9**

Eligible households can apply for up to £400 of support. The level of support awarded may fluctuate with the price of oil. The target for payment to be issued is 48 hours from the time that all required evidence is received.

For residents whose household income is above the level for means-tested benefits, other support is available. The council funds Citizens' Advice Rural Cambs to deliver an income maximisation service. <https://www.citizensadvicerruralcambs.org.uk/>

**HOLIDAY VOUCHER VALUES** - Following the Government's withdrawal of the Household Support Fund, replaced by the Crisis & Resilience Fund with lower levels of funding, the council has agreed holiday voucher values as follows for the coming holidays.

<b>Holiday Period</b>	<b>Weekly Voucher Value</b>	<b>Total Voucher Value</b>
May Half Term (25 – 29 May)	£10	£10
Summer (21 July – 1 September)	£10	£60

The Crisis & Resilience Fund is expected to support all those facing 'financial shocks', not just children eligible for free school meals.

**LOCAL GOVERNMENT REORGANISATION** - The combined parishes of Burwell and Woodditton county divisions came together to deliver some public engagement events. Thank you to those who attended. We also worked together to send ministers a letter to make the case for our local area, ensuring the voice of our communities was heard. This was supported your County and District Councillors.

The government consultation at the end of March, and we will now have to wait until the summer to know the future of how our part of the world will be governed at local level. Thank you to everyone that has engaged with the process, responded to the consultation, and all the hard work undertaken by every parish council in representing the collective views of our area.

**HIGHWAYS** - The approach to the Six Mile Bottom Road junction in Brinkley is scheduled to see improvements in the middle of May. This will hopefully see an end to the recent increase in near misses at this junction.

If all has gone according to schedule, the following roads should have received treatments in April:

- Bottisham: Arber Close, Bradford Close, Peacock Drive and Tunbridge Lane
- Dullingham: Brinkley Road (Kings Head to Eagle Lane), London Road
- Kirtling: All main roads.

Surface treatment is scheduled in mid-June on the B1063 from Newmarket, past Cheveley and Ashley out to the Suffolk boarder beyond Silverly; and on Moulton Road, Cheveley.

Maintenance Officers are breaking through the winter backlog on potholes. We should start to see a noticeable difference over the coming months. For anyone interested to find out more about this year's road conditions, Highways & Transport Committee chair Cllr Alex Beckett has written a very informative article which is well worth a read at <https://notesfromalex.substack.com/p/why-are-the-roads-so-bad-rightnow>

*Cllr Jonny Edge, 07974348141,  
[jonny.edge@cambridgeshire.gov.uk](mailto:jonny.edge@cambridgeshire.gov.uk)*

# HARRISONS OF BURWELL LTD

**Plumbing and Heating**

*FREE ESTIMATES GIVEN*

Gas Boiler Servicing

**Clarence House, 7 Ness Road, Burwell, Cambs CB25 0AA**  
**Telephone: Newmarket 01638 742873 - Mobile 07932 773515**

**email: harrisonsofburwell@gmail.com**

Gas Safe Registered

## k-domestic electrical solutions



Complete installations & rewires

Small and large alterations

Lighting

Internal & External work

PAT testing

Periodic Inspection & Reports

Full Inspection, Testing,  
Verification & Certificate issue

LED

Under Floor Heating

Voltage Optimization

your local electrical service of choice and recommendation

**Karl Howe**

**01638 610438 M: 07541 008613**

Email: [enquire@k-elecsolutions.com](mailto:enquire@k-elecsolutions.com) Website: [www.k-elecsolutions.com](http://www.k-elecsolutions.com)

Fully qualified Part P and 17th Edition

City &  
Guilds  
Qualified



## Chiropody

**In your own home**

**Save £5**

**off your first treatment  
when you present this advert.**

**Call 01638 814174 for an appointment**

**Daniel Harris BSc Hons MChS**

**Fully qualified and Registered with Health Care Professions Council**

## *District Councillors' Report*

**CHANGES TO BIN COLLECTION** - Delivery of the new bins is proceeding, and you should have received, or about to receive, two bins: one for general waste and the other for food waste. The new service is due to start in June, once all the bank holidays are over, and a regular routine is established.

Full information will be given with the arrival of the new bins. Information can also be sought from the Council web-site.

**CHANGE TO GROUP SIZES** - One Lib Dem member has left the party and decided to form a group with the Conservatives; the Conservative and Independent Group has 15 members, and the Lib Dem and Independent Group has 13 members.

**OPERATIONAL SERVICES COMMITTEE 23 MARCH 2026** - Not an exciting meeting, as the agenda contained a number of housekeeping reports: the ECSS business plan for next year, the Community Safety Partnership six-monthly report, End of Year Reports on Service Delivery and the Plans for next year, Quarter 3 2024/25 Budget Monitoring Report (which predicts an underspend of £229,000 on operating costs and an overspend of some £3.7m on capital mainly for buying black bins and for the Mepal Crematorium had been deferred from the preceding year.

The new bin collection arrangements were on course for a June start.

The proposed Mepal Crematorium rules and regulations were presented, discussed, and accepted.

Finance & Assets committee 26 March 2026

Two items of housekeeping were discussed: the ECTC Business Plan for the next year, and End of Year Reports on Service Delivery and the Plans for next year.

The proposed Mepal Crematorium fees were presented, discussed and accepted, even though no benchmark for them was presented.

Two new funds were created, one for Local Infrastructure, the other for Inclusive Play and Open Spaces. Information about these funds will be provided to Parish Clerks.

**SURGERY** - On Tuesday 19 May at Fassage Hall, Lode, from half past six to half past seven, and to be followed by socialising at The Shed, Lode Road, Lode.

*Cllrs Charlotte Cane MP ([charlotte.cane@eastcambs.gov.uk](mailto:charlotte.cane@eastcambs.gov.uk)) 07976 607512 and  
John Trapp ([john.trapp@eastcambs.gov.uk](mailto:john.trapp@eastcambs.gov.uk)) 0794 268 5599*

---

**Copy deadline for next issue is 14 May.**

*Please send material to the editor  
at [BottishamCresset@gmail.com](mailto:BottishamCresset@gmail.com)*



## **PASSAGE HALL, LODE (CB25 9HB) AVAILABLE TO HIRE FOR YOUR SOCIAL, BUSINESS OR SPORTING EVENT**

Passage Hall is a community facility located on the edge of the recreation ground next to the children's play area in the village of Lode.

It has a 12m x 6m main hall, lobby, well equipped kitchen, patio area, toilets.

The recreation ground is also available to hire and there are sports changing facilities in a separate wing of the building and accessed through a separate entrance.

See website for further details— <https://fassage.lemonbooking.com>

Bookings can be made through the website or contact:

Via email: [clerk@lode-pc.gov.uk](mailto:clerk@lode-pc.gov.uk) or phone 07369 248998



### My love for dogs

### An alternative to Kennels

A personal, caring approach to dog care.

In our home, your dog will receive two hour-long walks every day as well as treats, socialisation with other dogs and the administration of any required treatments.

- Fully insured and police checked
- Licensed by Sth. Cambs. District Council.

For further details call Amanda on  
07903 806750

Based In Steeple Morden near Royston.

# C & BLINDS C

Specialists in Blinds  
Any Size, Any colour

Vertical Blinds  
Roller Blinds  
Venetian Blinds  
Wooden Blinds  
Roman Blinds

Repairs

Free estimates

01223 211171  
07761 262070

## *Charlotte Cane MP Reports*

### **KEEP EAST CAMBRIDGESHIRE MOVING**

Many residents have contacted me recently about the rising cost of everyday life – particularly the price of getting around and heating their homes. From filling up the car to travelling to work or keeping warm, pressures are building fast for families and businesses across Ely and East Cambridgeshire. That’s why I’m calling for urgent action to help keep our area moving.

I’m pressing the Chancellor for an immediate 10p cut in fuel duty, which would reduce prices at the pump by around 12p per litre. In a largely rural area like ours, where many people depend on their cars, this would make a real and immediate difference. Alongside this, I’m backing a wider package of measures to reduce transport costs, including cutting bus fares to £1, reducing rail fares by 10%, and lowering the cost of electric vehicle charging by cutting VAT and tackling unfair network charges.

I’m calling for these measures to be introduced for an initial three-month period, with the option to extend them if high prices persist. People need help now, not later.

I also continue to campaign for fairer support for off-grid households. Over a quarter of homes locally rely on heating oil or LPG rather than mains gas, leaving them especially exposed to volatile global prices. I’m therefore calling for an immediate three-month VAT holiday on heating oil and LPG, and for the introduction of a proper price cap, similar to the one that already exists for gas, to protect rural households from extreme price spikes.

In the short term, I want residents to be aware that a £53 million Government support package for vulnerable households reliant on heating oil or LPG is now available. Applications opened on 1 April, and eligible households may be able to receive up to £400 in support. (More information here: <https://www.cambridgeshire.gov.uk/council/communities/support-with-the-cost-of-living/crisis-payment>). The fund is limited, so I would urge anyone who may qualify to apply as soon as possible. I encourage those not eligible but in need of support to seek advice from Citizens Advice.

I know that for so many, this relief won't be enough, or it will be too little, too late. After the Council's funding allocation, I wrote to the Chancellor to urge her to reconsider the funding formula in light of skyrocketing prices and offer more support for all. I will continue pressing the Government to go further and act decisively to support households across Ely and East Cambridgeshire during this challenging time.

P.S. Have you signed my petition calling on Government to fund long-term fixes for our peat soil-affected roads? These roads are failing twice as fast and costing far more to maintain. Back my “Fix Our Soil-Affected Roads” campaign—please take 30 seconds to add your name: <https://bit.ly/fixoursoilaffectedroads>



**Copy deadline for next issue is 14 May.**

*Please send material to the editor at [BottishamCresset@gmail.com](mailto:BottishamCresset@gmail.com)*




**NICK PELLEGRINI  
ROOFING**

## Reliable Local Roofing Services

- Roof repairs
- Missing or broken tiles replaced
- Leak detection & repairs
- Ridge tiles & repointing
- Gutter repairs & cleaning

**Free quotes – Friendly local service**

 **Call Nick: 07720 321968**

[nickpellegriniroofing@gmail.com](mailto:nickpellegriniroofing@gmail.com)



*Natural Touch*  
REFLEXOLOGY

## Reflexology and Holistic therapies

a mobile service consisting of

Reflexology  
Indian head Massage  
Back Massage  
Aromatherapy.

To book an appointment  
Contact Lynne

VTCT qualified  
Tel: 07817 551235

e-mail: [naturaltouchreflex3@yahoo.com](mailto:naturaltouchreflex3@yahoo.com)

## DB Electrical & Building Services

**Dale Badcock  
07718 122538**

[dbelectricalandbuilding@gmail.com](mailto:dbelectricalandbuilding@gmail.com)

All domestic work undertaken

- Rewiring
- Lighting
- Burglar alarms
- Security Lighting
- Lighting design
- Controls specialist
- Renovations
- Alterations
- Kitchens & Bathrooms

91 Northfield Park  
Soham  
CB7 5XA  
01353 720570

[www.DBElectricalandbuilding.co.uk](http://www.DBElectricalandbuilding.co.uk)

*Christopher*  
THE  
LOCKSMITH

## ARE YOUR LOCKS BEHAVING BADLY?

We Value Old Fashioned Customer Service  
A Local Trusted Family Business Since 1989

 Specialist in UPVC & Wooden Doors

 No Call Out Charge

 No Fix No Fee

 All Work Fully Guaranteed

 10% Senior Citizen Discount



For More Advice & Help Call Christopher:

**07772 111 222**

[www.christopherthelocksmith.co.uk](http://www.christopherthelocksmith.co.uk)

## *Planning Notes*

### **NEW APPLICATIONS:**

26/00253/CLP (PP-14714420), Application Received: Tue 03 Mar 2026. 3 Arber Close.  
Part conversion of the garage to form ensuite.

26/00303/CLP (PP-14777372), Application Received: Fri 13 Mar 2026. 5 Maple Close.  
Single storey rear extension following demolition of existing rear sun/garden room.

26/00321/TRE (PP-14792634), Application Received: Thu 19 Mar 2026. Parsonage Farm  
112 High Street.

T1 Plum - Reduce height by 2 metres to allow light and space on driveway

T2 Hazel - Coppice to 3foot above ground to allow space in garden and allow light into next door house

T3 Hazel - Coppice to 3foot above ground to allow space in garden and allow light into next door house

26/00332/FUL (PP-14789688), Application Received: Mon 23 Mar 2026. 5 Thomas  
Christian Way. Single-storey rear and side extensions with fenestration alterations.

### **PLANNING APPLICATIONS APPROVED BY ECDC:**

26/00184/TRE, Application Received: Mon 16 Feb 2026. 115 High Street.

T1 Laburnum – Fell, T2 Laburnum - Remove a leaning stem, T3 Laburnum - Reduce by 2m in height, T4 Prunus – Fell, T5 Yew - Reduce by 2m in height, T6 Photinia - Reduce by 1.5m in height

## *Letter to the Editor*

As a virtually daily user of the Post Office and Coop, may I respond to David Pearson's letter in the current Cresset regarding the double yellow lines at the Triangle.

I don't know if the gentleman has a Blue Badge but these are the national guidelines for those who do. Blue Badge holders can park on double yellow lines at any time for up to 3 hours when displaying their badge, provided there are no loading restrictions and the vehicle is not causing an obstruction or danger. .

As an aside, I understood that there were to be double yellow lines on the High Street opposite the Old Bakery to facilitate the buses turning from the High Street into Bell Rd which I feel would have been much more beneficial to road safety than cutting parking on the Triangle.

Yours  
John Wilson

## NAAFI Break

First Wednesday of every month from 10am to 11am,  
in the cafe at Anglesey Abbey  
Quy Road, Lode, Cambridge,  
Cambridgeshire, CB25 9EJ



Come along, for a good old chin wag, meet new faces and feel  
connected within your local community.  
Gary looks forward to welcoming you.  
He will be wearing a Help for Heroes T Shirt.



## FOUR SEASONS

PROFESSIONAL TREE SERVICES

Qualified & Professional Tree and Client Care

PRUNING | LOPPING | FELLING  
PLANTING | REDUCING & RESHAPING  
CROWN RAISING | HEDGETRIMMING  
THINNING | POLLARDING | STUMP REMOVAL  
OVERGROWN GARDENS PUT EACH IN SHAPE  
FRUIT TREES TREATED  
LOG & WOODCHIP SALES

FREE ESTIMATES & ADVICE  
WITH NO OBLIGATION

For quality jobs at a competitive price  
01353 721665 - Mob 07771 707921

All work carried out to BS 3998 Standard  
A genuine family business  
est. for over 30 years - Fully insured

The Name you can trust.

## VFM FLOORING LTD.

UNIT 10, 56 HIGH STREET, BOTTISHAM - CB25 9DA

**CARPETS • VINYLS • LAMINATE & WOOD•  
ACCESSORIES • LUXURY VINYL TILES**

WIDE RANGE OF CARPET REMNANTS IN STOCK



**OPENING TIMES:**  
TUESDAY - SATURDAY  
10:00AM - 4:00PM

**FREE HOME VISIT + ESTIMATE SERVICE  
OUT OF HOURS APPOINTMENTS AVAILABLE**

**PHONE:** 07707 801782  
**EMAIL:** vfmflooring@gmail.com  
**WEBSITE:** www.vfmflooring.co.uk

ALSO FIND US ON:



News from Bottisham WI: on March 17th we had our AGM where we had a detailed report of last year's activities and accounts, and we elected our committee members for the forthcoming year.

We have a packed calendar of speakers for 2026. We look forward to a talk about the East of England Air Ambulance on 19th May. Future dates and topics are available from our branch Secretary Jenn White.

Bottisham WI started in 1918 with members helping in the war effort to produce food by picking fruit, making Jam and warm clothing for our soldiers fighting in France. We have just celebrated our branch's 108th anniversary. Over the years the WI has grown in membership numbers and still provides a forum for women to socialise and contribute to their local community by making things for those in need and fund raising for good causes. We remain a non-political and non-religious organisation. Our late Queen Elizabeth II was our patron and regularly attended meetings when her schedule permitted. She was Honorary President of Sandringham WI.

We meet monthly in the Poppy Room at the Bottisham Sports and Social Club at 7:30 pm. Our next two meetings are on 19th May, and 16th June. Please contact Jenn White for further information (details at the back of this month's Cresset).

**You are all welcome to come along!**

*Debbie Wilson (Branch President)*



**Monday May 18th -  
Made in Dagenham (15)**

**Monday June 15th -  
The Choral (12)**

Doors open at 6.45pm with the film starting at 7.30pm. Admission is £7 which includes free refreshments.  
If you would like to reserve seats, please email [richardjbowler@outlook.com](mailto:richardjbowler@outlook.com) or phone 07582 560566.

# The Cambridge Bath Co.

*Exquisite bathroom transformations*

## NEED A NEW BATHROOM OR TILES?



Planning a new bathroom. Choose from supply only or full supply and installation, with everything you need sourced from one place.

Our design studio offers a full range of carefully selected bathroom products & finishes to help bring your project together.

We supply:

- Baths, showers & basins
- Brassware & bathroom fittings
- Wall & floor tiles (Bathroom & Kitchen)
- Vanity units & storage
- Worktops & surfaces
- Mirrors, lighting & accessories

Our team can help you choose finishes that work beautifully together, ensuring your bathroom feels well designed.

Our Bottisham design studio is appointment only. Book your visit via our website or give us a call to start planning your bathroom.

The Cambridge Bath Co  
Beautiful bathrooms, expertly curated.

[www.thecambridgebathco.co.uk](http://www.thecambridgebathco.co.uk)  
01223 782732

## *News from Bottisham Medical Practice Patients' Participation Group*

**VACCINATIONS!** - We are administering Covid booster vaccinations from the middle of April. Eligible patients are

1. Those aged 75 and over
2. Care home residents
3. Those 6 months and older who are immunosuppressed

We are also keen to vaccinate those 80 and over against **RSV**. RSV stands for respiratory syncytial virus. Classically it causes bronchiolitis in babies but can also lead to a nasty pneumonia in older people.

**FRAILITY SCORING** - Please don't be alarmed if you see we've scored you as moderately or severely frail in your records. We are being encouraged to do this to reduce your risk of falls as target blood pressure and blood sugar readings are different if you're a little more frail than you used to be. Also we need every patient's **weight and height** measurements. Over the course of the year we will be messaging everyone for this information. Please feel free to come and use our measuring equipment in our pod in reception ahead of us asking you. Reception can then add this to your records.

**ABTRACE** we are starting to use a new recall system. The text messages will ask for your date of birth to confirm who you are and will then allow you to book any recall appointment you need eg diabetes review. You may be asked to complete a questionnaire ahead of your appointments eg asthma or heart failure reviews.

**WEIGHT LOSS INJECTIONS.** We have had many enquiries regarding these. NHS funding criteria is very strict and currently we only have 8 patients who are eligible all of whom have been contacted. As more patients are eligible as the criteria changes we will contact you. If you are purchasing these injections privately please note it is important to use reliable contraception as their risks in pregnancy are unknown. The contraceptive pill may have its absorption affected by these injections and thus not be reliable. If you're on HRT, patches and gels are recommended as the tablet formulation may have its absorption affected

**APPOINTMENTS:** For the first quarter of this year we had 185 appointments logged as DNA, (Did Not Attend) which equated to just under 60hrs of lost clinical time. We appreciate that circumstances and situations can change at short notice but ask, if you are unable to attend your appointment please let us know so we can reallocate this to another patient

**ACCESSING THE PRACTICE:** as you will be aware we have been operating a Triage system since 1 October, currently 11% of our patient are accessing us via the NHS App, 78% via our website and 11% are either attending or telephoning the Practice. By whatever means you contact us, please stay available to take calls swiftly when an appointment maybe booked, often within minutes of your request. If you have not heard from us within 4 hours your form may not have been received so please call us.

The surgery will be closed for training from 2pm on 15 May. Use 111 if necessary.

**PRESCRIPTIONS:** With 2 bank holidays in May please order by 15 May to collect on 22. Hopefully you will already have ordered by the 24 April for collection on 1 May.

*(Continued on page 23)*

# BOTTISHAM TRIANGLE SALE

**SATURDAY 9th MAY 2026  
10-12 NOON**

Bottisham & District Gardening Club  
*Plants and Produce*

Bottisham Community Library  
*Books and Jigsaws*

Lode Women's Institute  
*Cakes and Buns*

**Help to support your local groups**



**Bank Holiday Monday  
4th May 2026**

**12 noon to 5pm**

*Fairground, Village Fair, Maypole Dancing,  
Morris Men, Craft Stalls, Live Entertainment and more*

Entrance free. Parking £10 per vehicle  
£5 Blue Badge holders and motorbikes

[www.reachfair.org.uk](http://www.reachfair.org.uk)   
**Fair Green, Reach CB25 0JD**



BURWELL AND DISTRICT FLOWER CLUB  
PRESENTS

RACHAEL BORENKOVA

A FLORAL DEMONSTRATION ENTITLED  
'LET'S GO TO THE FLOWER SHOP'



MAY 13TH AT 7.15 P.M.  
THE GARDINER MEMORIAL HALL BURWELL

VISITORS WELCOME £8

*Continued from page 17*

**NEXT MEETING DETAILS:** 6.30pm in the waiting room at the surgery, date to be advised. There will be a talk by Dr Shackleton. If you wish to join our meetings or consider joining the committee please email our chairman s.j.gilson@btinternet.com. Or speak to reception.

*Bottisham Medical Practice Patients Participation Group*

---

---

## ***Bottisham Community Library Association***

---

---

### **2026 National Year of Reading**

**May** - This month is the start of the Primary School weekly visits to the library and it's something we look forward to each year. The children really enjoy choosing their own books to take home to read. But they do need a library card to take out a book and preferably one of their own. It's really easy to register at the library with your child and they'll receive the card straight away, no waiting and no cost! We have had a lot of disappointed children and a few tears when they realise they haven't a library card so make sure they are registered before the visit.

The Junior Fiction shelves are well used during this time and we are lucky to have an excellent choice for 8-12 year olds as the College also has a good stock of popular and exciting writers.

Book of the Month for May is a new Junior Fiction book '**My Soul, a Shining Tree**' by **Jamila Gavin** and tells the true story of a First World War Gunner awarded the Victoria Cross for bravery and a story about friendship and courage.

**How does Bottisham Community Library fund the books on the shelves?** The Community Library's main purpose is to have books on the shelves to lend to our borrowers – and especially in this National Year of Reading when we want to encourage people to start reading again. We receive no books from the Public Library Service and no funding to buy books from anyone. All the books have to be bought by money we have raised. We do receive donations of books from the community and we appreciate this but we need books for all ages that are paperback, clean, up to date and of good quality – books that you would want to borrow from our shelves. It is a difficult task but we have managed it so far. We also try to ensure you have the opportunity to read books that are up for awards or new books by popular authors.

If we receive duplicate books they go on our 'For Sale' shelves or are sold at our stall on the Triangle. Look out for our latest stall on **Saturday May 9th**. All the money raised goes to the library.

**Lego Club and StoryTime** will be on Saturday May 16th at 10.30. Younger children will enjoy our collection of Duplo.

The date for the **Mobile Library visit to Bottisham** is **Thursday, May 28th** and the visit to Lode will be Wednesday May 13th.

**Start Reading!**



HILTON PARK

BARCHESTER HEALTHCARE

# Where life stories inspire great care.



When considering care for yourself or a loved one, it's important to find a place that values you for the unique person that you are.

Our dedicated team seeks to understand more than care needs. We get to know each person's life story, passions and preferences to shape their care, support and experiences – bringing joy, purpose and fulfilment to each day.

**Call 01223 659 832 to arrange  
a visit or to find out more.**

Hilton Park Care Home, Bottisham, Cambridge, CB25 9BX

**Residential care • Nursing care • Respite care & short breaks**

[www.barchester.com/HiltonPark1](http://www.barchester.com/HiltonPark1)



## *Bottisham Airfield Museum Group (BAMG)*

After a great start to the season on Easter Sunday and Monday the Museum is now into May and along with the normal opening on Sundays and Wednesdays 10.30 to 16.00, we shall be open on both Bank Holiday Mondays, 4th and 25th May.

The opening weekend was a great success with lots of visitors; some arriving in WW2 jeeps, vintage cars and on vintage motorcycles. There were also some re-enactors on site dressed in smart WW2 uniforms.

On Saturday 11th April we hosted the Cambridge Car Club for the morning, as part of a club motoring event.

Helicopter pleasure flights operated by Adventure 001 will be operating from the airfield on May 6th and 20th, and then at roughly two-week intervals throughout the summer.

For details of dates, availability and bookings, visit the 'Helicopter Flights' page on our website [www.bottishamairfieldmuseum.org.uk](http://www.bottishamairfieldmuseum.org.uk)

Sunday 10th May sees our first Classic Car, Motorcycle and Military Vehicle show of the year. Listen to live music from Bottisham favourites 'Back in Time' while looking around the vehicles and tasting the food available. Entry is £10 for adults and free for under 16s, so do come along and join us.

And of course, anyone who would like to join our team of volunteers in the museum or the café, please contact us via our website or pop along to see us on any open day.

We hope to welcome you soon.

*Charles Cook - Museum Volunteer*



## *Anglesey Group Mothers' Union*

We had a change to our venue on 19th March as we met instead at Anglesey Abbey café for a cuppa and a chat; this was because on Friday 27th March our diocese held a Lady Day service in St Mary's Church Ely. It was special because not only were we commemorating the Annunciation - the day when the Angel Gabriel told the Virgin Mary she would conceive Jesus Christ, but this year is the 150th Anniversary of the founding of the Mother's Union. Four members of our Anglesey Group joined the service, followed by tea and birthday cake. As well as a chance to chat over packed lunches, we had a quiz on local church knowledge before the service and afterwards heard updates from each of the groups attending about what they have been doing in their Mother's Union meetings. It was really good to feel part of a much wider fellowship and those that were able to go really enjoyed the day.

**Our next meeting is on 18th June at 2.30pm at The Fassage Hall, Lode, when we shall be joined by Rev'd Keith Morrison.** Visitors are very welcome to join us.

*Alison Martin*

**MARTIN BALL**  
♦♦♦  
FIREWOOD & TIMBER

[www.martinballfirewood.co.uk](http://www.martinballfirewood.co.uk)

[sales@martinballfirewood.co.uk](mailto:sales@martinballfirewood.co.uk)

Office • 01799 586 513  
Woodyard • 01371 830 503  
Mobile • 07980 258 003

Blunts Farm Yard  
Thaxted  
CM6 3PX



## PEACEFUL & PRAYERFUL ART GROUP FOR ADULTS

**HOLY TRINITY, BOTTISHAM**  
Fridays 1.30pm - 3.30pm

**Those of all faiths or none are WELCOME!**

No art experience necessary.  
Support given to get started if required.

A wide range of art materials supplied:  
Charcoal / felt tips / pencils / crayons  
watercolour pencils / paints / pastels

## Sing and Sign

Better communication for babies & toddlers

Find out what your baby is thinking and reduce  
those toddler tantrums



Thursday mornings at Quy Village Hall &  
other venues around Cambridge





*Saturday 6<sup>th</sup> June 2026*

*Bottisham Village Event*

*A celebration  
for the whole village!*

*A full day of events for everyone to  
enjoy.*

*Thanks to the Parish Council for  
supporting this event.*

*See overleaf for event timings*

*11.00 - 16.00 'Communities Together Exhibition' at Holy Trinity Church*

*Pop along to see what is going on in our community.*

*12:00 onwards Food Stalls plus Tea & Coffee at the Social Club.*

*A small selection of food stalls plus facepainting, hair braiding, temporary tattoos, and pocket money toys.*

*12:00 onwards the Bowling Green will be Open.*

*Have you ever tried to bowl; the green will be open for you to try.*

*12.30 - 13:30 Fay will be singing to keep us entertained at the Social Club.*

*Bring your neighbours, friends and family to the club and listen to Fay singing our favourite songs.*

*13.30 - 14.30 The Green Dragon Morris Dancers.  
Get ready to jingle your bells and be entertained  
by our talented group of Morris Dancers.*

*15.00 - 16.30 Magician and children's entertainer.  
If you like magic this is for you. The show is  
outside in the Social Club car park.*

*15:00 - 18:00 BBQ.  
Time for tea. Hot dogs and burgers.*

*17.00 - 19:30 'Dark Horses'  
Live music, sit back and listen with  
a drink outside at The Sports and Social Club.*

*20.00 - 24.00 'Ska Dust'  
Round the day off listening and dancing to the  
sounds of our evening band.*

*All entertainment is free of charge, so come along,  
enjoy yourselves and support your village.*

*In the event of bad weather, outside events will  
move into the Social Club main hall.*

**We would love to see you at  
Bottisham Community Sports and Social Club.**



### **OPENING HOURS**

Monday to Thursday – 5pm to 11pm  
Friday – 4pm to 11pm  
Saturday - 12 noon to 11pm  
Sunday - 12 noon to 9pm

Non-Members are always very welcome.  
If you would like to join, the membership fee is just £20 per year plus a £1 share in the first year.  
Members benefit from reduced bar prices.

## **WHAT'S ON?**

**Open Mic Night on the last Friday of each month.  
Free Entrance**

Come and listen to the local talent.

**Every Friday from 4pm until 7pm is 'Happy Hour'**  
£1 off all alcoholic drinks for members and non-members.  
A great way to start the weekend.

**Also, every Friday at 7:30pm is the Meat Draw**  
£1 per ticket – £100 worth of meat prizes to be won.  
All entrants must be in the club at the time of the draw.

**Every Saturday from 10am until midday is 'Sausage Saturday'**  
Bacon or Sausage baps with unlimited Tea or Coffee for just £2.50

### **Other Events**

**Saturday 12<sup>th</sup> September - Roy Orbison Tribute**  
**Friday 30<sup>th</sup> October – Adults Halloween Party**  
**Saturday 31<sup>st</sup> October – Children's Fancy Dress Halloween Disco**  
**Saturday 5<sup>th</sup> December – Parish Council Christmas Event**  
**Monday 14<sup>th</sup> December – Newmarket Town Band and Christmas Draw**  
**Saturday 19<sup>th</sup> December – Children's Christmas Party**  
**Thursday 31<sup>st</sup> December – New Years Eve Party with 'The Jjarrs'**

Please refer to the website. [www.bottishamsocialclub.co.uk](http://www.bottishamsocialclub.co.uk) for the latest information. If you wish to be updated with the latest news, please email [bottishamcsasc@gmail.com](mailto:bottishamcsasc@gmail.com)

**31 Downing Close, Bottisham, Cambridge CB25 9DD Tel. 01223 812063**

## *Bottisham Bird Brain*

One of my loyal readers asked me recently if I could revisit the Tit family in this column. To my surprise, when I checked, it was exactly three years ago (Cresset May 2023) when I covered the differences between Blue Tit and Great Tit, along with their remarkable abilities to sing, like all songbirds, by virtue of a double-chambered voice-box called the syrinx, which enables them to breath and sing during both inhalation and exhalation!

You may remember how the slightly larger Great Tit (*Parus Major*) emits a two-tone “tea-cher, tea-cher” song, whilst the Blue Tit (*Parus Caeruleus*) typically trills a “tsee-tsee, di-di-di” sequence. And we learned how remarkably intelligent these pea-brained creatures are... that they not only learn from their own trials and errors, but also by observation and mimicry, so that a behaviour can transmit ‘horizontally’ throughout a population.

Later (Cresset February 2025), we also learned about the Long-tailed Tit, a busy, monogamous, family-oriented bird, an animated and acrobatic individual, pink in the summer and extremely cute-looking all year round.

So, what other Tits might we see in our gardens? There is one other member of the Tit family that you’re likely to encounter locally and, potentially, two others around here, but not common or regular visitors to your feeders. All three have similar, mainly buff, colouring with black crowns so we’ll focus on the differences; and, fortunately, the common one is the easiest to identify!

**COAL TIT** - *Periparus ater* is the size of a Blue Tit but not as colourful, with a greyish back, a buff front, black crown and white cheeks and a fine bill for picking the seeds from conifer cones. Check for a thin white wing-bar, too, but its most distinctive feature, is a striking white patch at the base of its neck, which stands out from the black head. Any absence of this white patch would render the bird one of the two species below!

Coal Tit is a regular visitor to garden feeders and will often associate with mixed tit flocks in woodland and garden areas. It is a ‘resident’ bird (i.e. present all year round) throughout the UK and enjoys up to 680,000 territories. Unusually, for a small passerine, the population trend is upwards, especially in urban areas where its food sources are supplemented by humans. Its song is slightly similar to the two-note, repetitive chant of the Great Tit, but Coal’s voice is sweeter with less distinction between the notes – more like an actual whistled tune than the harsher Great.

**MARSH TIT** - *Poecile palustris* is the next most likely bird of similar colouring to be seen in your garden. The body and head are similar to Coal, but very plain (no wing bar) and the absence of the white nape is the first thing to



*(Continued on page 33)*



# DRAIN-PLUMB

*Plumbing, Heating & Drain  
Services*

## BLOCKED DRAINS CLEARED

- Gas Boiler Service & Maintenance
- Power Flushing of Boilers & Heating Systems
- Home Buyers CCTV Drain & Plumbing Surveys
- All Plumbing & Heating Repairs/Alterations
- All work Guaranteed

TEL: 01638 742873  
MOB: 07932 773515

7 NESS ROAD,  
BURWELL  
CAMBRIDGE, CB25 0AA

## TV AERIALS

## SATELLITE

## DIGITAL FREEVIEW

Installations  
Extra points etc.  
Tuning in of TVs, Digiboxes etc.

Experienced local engineer  
**RICHARD FORTEY**  
**01638 662119**

No Call Out Charge

*(Continued from page 31)*

look for. It is not a common bird by Coal Tit standards, with only 41,000 territories, and it is 'red-listed' as of serious conservation concern, but it is at least as intelligent as the (very smart) Great Tit and will visit garden feeders as an alternative to its natural habitat in deciduous woodland. With a well-developed memory, it has been known to hoard and hide seeds in case of future scarcity.

**WILLOW TIT** - *Poecile montanus* is pretty unlikely to be seen in a garden environment, but might well be present in this area, particularly in wooded areas of fenland where it prefers the dampness of young willow scrubs and (ironically) marshy places. Plumage is very similar to Marsh, but a clear view reveals what is known as a 'wing panel' – a slightly lighter patch on the closed wing, formed by light edges to the flight feathers. It's a subtle difference though, and it wasn't until 1897 that scientists realised that they were dealing with two different species! Willow's declining population is also 'red-listed' by conservationists and current numbers are estimated to be only 3,400 pairs.



So, that's the entire tit family taken care of – with the exception of the Crested Tit, which is found only in the conifer forests of Scotland, and the extremely rare vagrant, Penduline Tit; so you can discount those as possible additions to your local listings. You may also have encountered Bearded Tits in East Anglian reedbeds – the nearest being Lakenheath – but these are not actually tits at all! They are in fact members of their own family of 'Reedlings'.

**STOP PRESS** - The Black-winged Kite was still lingering around the Ludham Bridge area of Norfolk during much of March; and the aftermath of Storm Dave resulted in the south-easterly winds bringing into the UK a host of early summer visitors including Nightingales, several different Warblers, a very early cuckoo and, incredibly, this year's second Killdeer Plover (see March edition). We seem to be inundated with Chiffchaffs around here now, but I am yet to hear my first Willow Warbler... they must be due any minute, by the time you read this!

*TTFN - Gerry Daish*

If you would happy company win,  
Dangle a palm-nut from a tree,  
Idly in green to sway and spin,  
Its snow-pulped kernel for bait; and see,  
A nimble titmouse enter in.

From *The Titmouse* by Walter de la Mare

---

**Copy deadline for the next issue is 14 May.**

*Please send material to the editor at [BottishamCresset@gmail.com](mailto:BottishamCresset@gmail.com)*



# M&P

## LANDSCAPE AND DESIGN

Patios, Block Paving, Fencing,  
Turfing and all Gardening needs.

References available on request.

Local tradesman • Free estimates

PLEASE CALL

**01223 811144**

MOB **07837 358550**

## N & G Marsh of Burwell

Specialising in bespoke metalwork  
and engineering

- ❖ Welding services
- ❖ Handrails
- ❖ Gates
- ❖ Metal railings
- ❖ Tow Bars
- ❖ Mower repairs
- ❖ RSJs supplies

Services to Building  
and Agricultural Industries

Brian Marsh Engineer

Tel. 01638 741354 Mob. 07519 493664

E: [Bookings@themeadowhouse.co.uk](mailto:Bookings@themeadowhouse.co.uk)

W: [www.n-g-marsh.co.uk](http://www.n-g-marsh.co.uk)

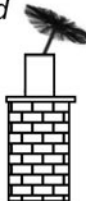
Unit 12, Meadow Ind. Estate  
Reach Rd., Burwell, CB25 0GH

## **R. BRISTLEY** Est. 1974

9 Collings. Place Newmarket CB8 0EX

### **BRUSH ELECTRIC SWEEP**

- *All Chimneys swept*
- *Solid Fuel, Oil and Gas*
- *Cowls, Nets and Pots fitted*
- *Carpets Cleaned*
- *Stoves Serviced*
- *Competitive Prices*
- *Very Clean*
- *Public Liability Insurance*



*also Classic Wedding Car Hire  
White Citroen DS21*

Tel: 01638 662439  
[www.rbristley.co.uk](http://www.rbristley.co.uk)

## **BED AND BREAKFAST**

### **THE MEADOW HOUSE**

2A High Street, Burwell,  
Cambridge. CB25 0HB



- En-suite rooms with colour TV.
  - Large car park and grounds.
  - Family rooms, children welcome.
  - English Tourist Board 4 Diamonds.
- Self catering cottage also available  
at Swaffham Prior.*

Brian & Hilary Marsh

Tel: 01638 741926 Mobile: 07519 493664

Email: [Bookings@themeadowhouse.co.uk](mailto:Bookings@themeadowhouse.co.uk)

Website: [www.themeadowhouse.co.uk](http://www.themeadowhouse.co.uk)

## ***Bottisham and District Gardening Club***

At our March meeting Mick Corbett came to enlighten us on the way fresh produce arrives on the supermarket shelves. He has spent 40 years in the industry with some of the biggest food retailers and producers. He is responsible for food safety and legality which means ensuring that Red Tractor, GAP (Global Agricultural Produce) and LEAF (Linking Environment and Farming) standards are adhered to. British produce is always sourced when it is in season, but we now demand salad throughout the year and strawberries on Christmas Day so he also has to respond to customer demand. Much of this produce is grown overseas when the British season ends, which entails him travelling to warmer climes to ensure that workers' welfare and ethical standards are maintained.

Tomatoes are now all grown under glass with production moving to Spain and Morocco during our winter. As gardeners we always swear by the taste of our home-grown produce, but food grown in this area can be on the shelves within a day and growers are always looking to improve varieties for taste and longevity.

Although supermarkets take their environmental responsibility seriously, a constant complaint is the amount of packaging. This has been a difficult issue to address, as some customers insist on pressing and squeezing every fruit or vegetable they consider purchasing, resulting in a lot of produce being spoiled and wasted. Cucumbers are a classic example; without their plastic sleeves their shelf-life is greatly reduced. Much as we would like to see fewer plastic bags the thought of customer contamination is not a pleasant one.

We will be having a plant stall on the Triangle in Bottisham on Saturday 9th May from 10am to 12 noon in conjunction with Bottisham Library and Lode WI.

**Our next meeting will be a trip to the garden at Histon Manor on 26th May.**

We normally meet at 7.30 p.m. on the fourth Tuesday of each month in the Poppy Room at the Bottisham Community Sports and Social Club. Membership is £20.00 a year and non-members are welcome to any meetings for a charge of £3.00.

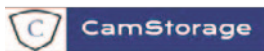
*Margret Coles*

**HAVE YOU THOUGHT OF  
ADVERTISING LOCALLY?**

**YOUR CUSTOMERS MAY BE CLOSER THAN YOU THINK.**

This space could be yours at very reasonable rates,  
both long term (cheaper) or short

**Email the Editor for details: [BottishamCresset@gmail.com](mailto:BottishamCresset@gmail.com)**



## Simple, Safe and Secure

Self Storage for your Business or Home

No Long Term Commitment

Personalised entry with unique key fob and Extensive 24hr CCTV  
Convenient vehicle access to all units for easy loading and unloading.



Please call 01223 901 021 or email us at [admin@camstorage.co.uk](mailto:admin@camstorage.co.uk)  
[www.camstorage.co.uk](http://www.camstorage.co.uk)



01638 428 060

01223 832 928

[www.Rothwells.biz](http://www.Rothwells.biz)

## Carpet Cleaning

### Stone Floor, Upholstery & Rug Cleaning.

*A few points that make us stand out from the others,*

Rothwell's has been in business since 1993.

We're an honest local family firm.

Our large truck mounted machines mean more cleaning  
& drying power for the best results possible.

Members of both the NCCA and TACCA.

We will move the furniture for a thorough clean.

100% satisfaction or it's FREE.

*Call Oliver and Max Campbell for expert help today.*

Rothwell's, Malting End, Kirtling, Newmarket, CB8 9HH

## **New Cambridge Airbase - Appeal**

Home to our Anglia Two (Cambridge) Crew, Cambridge Airport will be closing. Without a base in Cambridgeshire, we risk losing half of the invaluable service that currently responds to medical emergencies across our region.

Every day, on average, five people across Bedfordshire, Cambridgeshire, Norfolk and Suffolk need our specialist critical care team - people like baby Clayton who was born at just 26 weeks !

Clayton's story. - "I looked down and saw a tiny baby boy gasping for air" Clayton's Mum Mia recalls.

Our Anglia Two crew, Dr. Liam Neale and Critical Care Paramedic (CCP) Jon Locke were dispatched from their Cambridge base. Upon arrival, they found Clayton alive but extremely unwell. It was a race against time - which they had to win - so they began treating Clayton immediately, providing critical care at that very moment he needed it most.

Against all the odds, Clayton survived.

Now, we need your help to relocate and to build a new base from which we can continue responding to the medical emergencies presented to us.

365 days a year, 24/7, our crews deliver hospital-level care to people in their hour of need. We are not simply a rapid transfer to hospital; we take the emergency department to the scene, giving people the best possible chance when every second counts.

But, right now, this lifesaving service is under threat.

With no Cambridgeshire site, our air ambulance service would be cut in half - leaving just one base, in Norfolk, to cover the entire region. With no crew in the centre of the region, tasking times to patients, like baby Clayton, facing time-sensitive life-threatening emergencies, would increase dramatically - putting lives at risk.

As a charity, every mission we attend is possible only thanks to public donations - your support. Please act now to donate what you can afford to help us relocate and build our new base to protect the future of East Anglian Air Ambulance's lifesaving care.

Please act now by contacting us at [eaaa.org.uk/base](http://eaaa.org.uk/base). Together We Save Lives.

*Michael White*

---

**Copy deadline for next issue is 14 May.**

*Please send material to the editor at*  
**[BottishamCresset@gmail.com](mailto:BottishamCresset@gmail.com)**





# Hello neighbour

Bottisham's Co-op is open



Find us here:

12 High Street, Bottisham,  
Cambridge CB25 9DA

Open 6.30am - 10pm, daily



It's what we do

Red2Green is a registered charity celebrating over 25 years of supporting and promoting adult 16+ with autism and learning disabilities. We are based across 2 sites in Swaffham Bulbeck and Bottisham; 2 converted barns (Harvey's and Granary) in Park End and our Community Garden on the Bottisham Village College site. We support 90 service-users, 5 days/week, 50 weeks/year.

## COMING UP – COFFEE & PLANT SALE MORNINGS AND SUMMER FAIR!

We'll be hosting Coffee Mornings, Plant Sales, and Craft Sales at the Swaffham Bulbeck Pavilion and our Community Garden site in Bottisham over the next few months, and we'd love to welcome as many of you as possible. Please see the details below:

**May 11th - Bottisham Community Garden (10:30-12:30)**

**June 17th - Swaffham Bulbeck Pavilion (10:45-11:45)**

**July 6th - Bottisham Community Garden (10:30-12:30)**

We're excited to be hosting our Summer Fair on Saturday 13th June at our Park End site in Swaffham Bulbeck! More details will be announced soon, so keep an eye on our social media and upcoming leaflets for timings and updates.

## WE ARE HIRING!

We are looking for a number of Support Workers to join our Red2Green Team. Please visit our website <https://red2green.org/job-vacancies> for more information on how to apply.

Ways you can get involved:

- Volunteering opportunities – we are looking for Minibus drivers!
- Start a fundraiser in aid of Red2Green
- Visit our Community Garden in Bottisham and buy some plants (Mon-Fri, 9:30-4)
- One-off or monthly donations
- Sign up to our monthly newsletter
- Follow our social media pages and keep up to date with all things Red2Green

For more information about the wonderful work we do at Red2Green, please visit our website [red2green.org](https://red2green.org) or if you want to get in touch, feel free to email us at [info@red2green.org](mailto:info@red2green.org) or call us on 01223811662.

## Village Litter Picks 2026

### we need your help!



*We have a wonderful small group of volunteers who regularly help out, but we need more volunteers to get around more of the village every month, so if you can spare an hour and a half on a Saturday, please do come along.*

**Fresh air, friendship and looking after our wildlife**  
*Bring your gloves and join us for refreshments afterwards*

Starting Location	Date	Month
Bottisham Community, Sports & Social	16	May
Bottisham Community, Sports & Social	20	June

All events, once a month on a Saturday, starting at 10:00am (except December)

Ways to keep in touch with updates:

- ✓ Join the [Bottisham Village Litter Pick WhatsApp Group](#)
- ✓ Visit either the [Bottisham Events Facebook Page](#)
- ✓ Visit the [Bottisham Community Group Facebook Page](#)



ONG

“Successful entrepreneurs are givers and not takers of positive energy.” ANONYMOUS

**codge.com**  
**info@codge.com**  
**01449 675 548**

**Design & Origination • Website Design & Maintenance • Email Marketing • Digital Publishing • Logo Creation • Cartoons & Illustrations • Theatrical, Product Photography & Retouching • Business Stationery • Promotional Flyers & Posters • Newsletters & Magazines • Programs & Catalogues • Books & Brochures • Calendars • Reports • Signage, Displays & Banners • Personal & Wedding Stationery • Mac Training**

# Cambridge Cats Protection Making a better life for cats

Call 01223 528 312 to provide a forever home for a cat or kitten in our care. For neutering advice call 01223 236 188.

[enquiries@cambridge.cats.org.uk](mailto:enquiries@cambridge.cats.org.uk) | [cats.org.uk/cambridge](http://cats.org.uk/cambridge)

We are run solely by volunteers and appreciate your patience at busy times.



Cats Protection is a registered charity 203644 (England and Wales), SC037711 (Scotland) and is listed as a Section 167 Institution by the Charity Commission of Northern Ireland. BC\_1770



Here is some safety information to publish in your next magazine. Please feel free to get in touch if you need any further information.

### **DON'T LET A GARDEN SPRING CLEAN LEAD TO FIRE**

Staying safe outside is just as important as keeping your family safe from fire in your home.

As the Spring time weather (hopefully) begins to arrive, many will take the opportunity to get out in the garden and give it a tidy.

There are a few simple things to do which will help reduce the risk of having a fire:

- Dispose of garden waste using either a local waste pick up service, or take it to a local recycling centre. Do not light a bonfire!
- Ensure cigarettes are completely out
- Do not leave glass bottles lying on the ground – the sun's rays reflect through the glass and can start a fire

If you are planning to have a BBQ:

- Use barbeques on a hard, flat surface away from grass, shrubs or fencing
- Put disposable barbeques on bricks, do not place directly on grass

### **HELP KEEP YOUR HOME AND FAMILY FIRE SAFE – COMPLETE OUR ONLINE HOME SAFETY CHECK**

You can carry out your own home fire safety check online by visiting the Cambridgeshire Fire and Rescue Service website.

The online home safety check helps you carry out your own fire risk assessment and is a simple way to help reduce risks and keep your home safe from fire. It takes you through some simple questions about you and your home, then provides an action plan that you can download and print. You can fill it in for yourself or a member of your family that might need help.

Visit [https://bit.ly/Home\\_Safety\\_Check](https://bit.ly/Home_Safety_Check) to find out more and start your online home safety check.

For more information or to get in touch contact us at [firefire@cambsfire.gov.uk](mailto:firefire@cambsfire.gov.uk) or on 0800 9179994.  
Like us on Facebook for regular updates [www.facebook.com/cambsfrs](http://www.facebook.com/cambsfrs) or follow us on Twitter @cambsfrs.

---



**Copy deadline for next issue is 14 May.**

*Please send material to the editor at [BottishamCresset@gmail.com](mailto:BottishamCresset@gmail.com)*

Have you thought of advertising your business in **The Cresset**?  
Email the Editor for details: [\*\*BottishamCresset@gmail.com\*\*](mailto:BottishamCresset@gmail.com)

## OvenPad Cleaning Services

I will professionally & efficiently clean ovens, ranges, Agas, ceramic hobs, extractors, microwaves and BBQs.

**It's a dirty job, why not give me a call?**

Contact **Paddy Kelly** on

Tel: 01638 742703

Mob: 07752 631343

Email: [info@ovenpad.com](mailto:info@ovenpad.com)

Website: [www.ovenpad.com](http://www.ovenpad.com)

## ANDREW EVANS

01954 780 999 – 01223 864335

email: [andrew@omegaclean.co.uk](mailto:andrew@omegaclean.co.uk)

[www.omegaclean.co.uk](http://www.omegaclean.co.uk)

- ✓ Carpet Cleaning
- ✓ Upholstery Cleaning
- ✓ Tile & Grout Cleaning
- ✓ Leather Cleaning
- ✓ Oriental Rug Cleaning
- ✓ Carpet & Fabric Protection
- ✓ Allergy Relief Treatment
- ✓ Odour Eradication
- ✓ Stain Removal
- ✓ Carpet Fitting

Family Business Since 1980



# PEST PROBLEM?

CALL DRE PEST CONTROL

01954 230708

07789 502556

- Commercial & Residential
- One - off Call Outs
- Management Contracts

Cambridge & surrounding areas  
[www.drepestcontrol.co.uk](http://www.drepestcontrol.co.uk)



# BOTTISHAM BOWLING CLUB

31 DOWNING CL, BOTTISHAM, CAMBRIDGE, CB25 9DD.

## ARE YOU INTERESTED IN GIVING LAWN BOWLS A TRY?

AN INCLUSIVE ACTIVITY | SOCIAL & ENGAGING | FRIENDLY COMPETITION

### What is it?

- Lawn bowls is a great game for all ages and fitness levels.
- Non-strenuous, gentle exercise.
- Easy to learn but harder to master.
- Has an amazing friendly and supportive community.



### What do you need to try it out?

- A willingness to learn and have fun!
- Flat, no / low tread shoes to change into before play.
- Bring your own bowls or borrow some of the club's kit.



### CONTACT US TODAY!

If you're interested / would like to learn more, please reach out.

Email: [bottishambowlingclub@gmail.com](mailto:bottishambowlingclub@gmail.com)

† Participation is dependent on the availability of the green and coaches.



SCAN TO  
VIEW OUR  
WEBSITE.

**TOP 20**  
HOME CARE  
GROUP  
homecare.co.uk

Inspected and rated  
**Good**  
Care Quality  
Commission

**FREE ASSESSMENT**

**DAY, LIVE-IN OR  
NIGHT CARE AVAILABLE**

[www.greenwoodhomecare.co.uk](http://www.greenwoodhomecare.co.uk)



## Award-winning home care in the Cambridge area

We provide high-quality care to help you live independently, in the comfort of your own home. Our friendly, and well-trained carers, can support you with things like personal care, medication, companionship or anything else you need.

FOR MORE INFORMATION

**01223 850938**

[cambridge@greenwoodhomecare.co.uk](mailto:cambridge@greenwoodhomecare.co.uk)

# SG LAW

Plumbing & Heating Services

01223 803444

hello@sglawplumbing.co.uk

www.sglawplumbing.co.uk

BATHROOMS

HEATING

PLUMBING

SERVICING



## CB25 ACCOUNTING

An accountancy service that covers everything your business needs

For more details contact Paul on

info@cb25accounting.co.uk

07803 782423 cb25accounting



Sales, servicing, repairs and sharpening of all types of garden machinery.

Collection and delivery available.

Friendly, local and professional service.



C.W.KIRK LAWNMOWERS

01638 744 349

CWKIRKLAWNMOVERS.CO.UK

44 NEWMARKET ROAD BURWELL CAMBRIDGESHIRE CB25 0AE

# Bob Newman & Sons

*Piano Tuner*

Experts in all aspects of piano tuning,  
restoration and repair work



Please contact us to discuss your requirements

Mobile: 07736 411066 (Bob)  
07786 988175 (Matt)

Email: bob@bobnewmanandsons.co.uk

Web: bobnewmanandsons.co.uk  
(online booking for tunings available)

## Choosing the right flooring doesn't have to be stressful

- ✓ Trusted - Est 1996
- ✓ Local Business - Largest Showroom
- ✓ Guaranteed - Measure, Supply & Fit
- ✓ Free expert advice & no obligation quotes
- ✓ Trusted local flooring specialists
- ✓ Fully employed installers

## Award winning local flooring specialists Book your free expert consultation

T: 01223 233 233

E: info@floor-coverings.net

W: floor-coverings.net



Visit our showroom:

Floor Coverings, Dry Drayton Industries,  
Scotland Road, Cambridge, CB23 8AT  
Mon-Sat 9am-5pm

# FLOOR COVERINGS

Cambridgeshire's largest flooring  
showroom est. 1996

FREE no obligation quotes.

01223 233233

www.floor-coverings.net



Unit 31-32 Dry Drayton Industries, Scotland Road,  
Dry Drayton, Cambridge CB23 8AT  
Open: Mon - Sat 9-5

## S. NEAL *Carpentry and Small Works*

Offering a high quality  
carpentry and small works  
service in Bottisham and  
the surrounding area.

FLOORING • HANGING NEW DOORS  
KITCHEN RENOVATIONS • DECORATING •  
TILING • LANDSCAPING  
BESPOKE CARPENTRY



07703 043243

SNealCarpentry@Gmail.com  
@S.Nealcarpentry

# Bottisham Vehicle Services Ltd

Reliable, Friendly, Professional

Service and repairs to all makes,  
MOT testing, tyres, air conditioning  
Courtesy car available  
Local collection and delivery

10 Tunbridge Lane, Bottisham, Cambridge CB25 9DU  
01223 811919 • [simon@bvsltd.net](mailto:simon@bvsltd.net) • [www.bvsltd.net](http://www.bvsltd.net)

## WANTED

**ALL TYPES OF ANTIQUES, CURIOS & COLLECTABLES  
POLITE, LOCAL BUSINESS EST. OVER 25 YEARS  
IS LOOKING TO BUY THE FOLLOWING:**

- Old watches, clocks, scientific instruments ● Quality jewellery, costume jewellery, even items in need of repair ● Silver, silver plate, old copper & brass ● Glass, ceramics, china ● Militaria, weapons, medals, badges, uniforms, paperwork & photos ● Tribal art – masks, weapons ● Walking canes, sword sticks ● Sporting memorabilia ● Old toys, games and train sets ● Vinyl albums and singles ● Woodworking tools ● Furniture – antique up to 1970s

**Anything considered – give me a call before you throw it away  
POLITE & CONFIDENTIAL SERVICE. GOOD PRICES PAID.**

**STEVE DURRANT 01638 507037 OR 07740 591194**

**Email: [svdservices51@gmail.com](mailto:svdservices51@gmail.com)**

Have you ever stopped of a morning to sit down to have a cup of coffee in the house on your own, and thought it would be nice to talk to somebody?  
Well you can and very easily too. Come along to Meeting point on a Wednesday and have that cup of coffee with like-minded company



**in the Poppy Room at the  
Bottisham Community Sports  
and Social Club**

A place where you can meet old friends  
make new friends, relax, chat and enjoy  
coffee, cake and biscuits in a friendly  
relaxed atmosphere.

**EVERYONE WELCOME**

**ADMISSION FREE**

**PREMIER INVESTMENT MANAGEMENT SERVICES LTD**

INDEPENDENT INVESTMENT ADVISERS Authorised &  
Regulated by the Financial Conducts Authority

Specialist in Isa's & Isa Transfer's  
Investment Planning & Portfolio Management

To arrange a free consultation ring **01223-882422** or email  
**pims@globalnet.co.uk** or visit **www.pims-uk.com**

**L BOTTISHAM**

**SCHOOL OF MOTORING**

**Telephone: 01223 811556**

*All qualified instructors  
with extremely high  
1st time pass rates*

# ANGLIA TREE CARE

**LARGE ENOUGH TO COPE • SMALL ENOUGH TO CARE**

80% OF OUR WORK IS VIA RECOMMENDATIONS  
TREE SURGERY & FELLING • HEDGE MAINTENANCE  
STUMP GRINDING • FULLY QUALIFIED  
FULLY INSURED • 24/7 SERVICE  
All work carried out to BS 3998

**Free Estimates Given within 7 days**

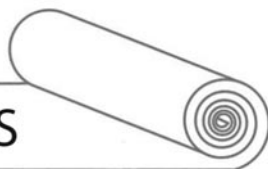


Tel. 01223 424454 • [INFO@ANGLIATREECARE.CO.UK](mailto:INFO@ANGLIATREECARE.CO.UK)

**M E M B E R**  
Guild of Master Craftsmen

## PETER FISHER

CARPETS - WOODS - VINYLs



A wide range of floorings supplied and fitted.  
Please call for a free estimate and select in your home.

Tel: (Bottisham) **01223 811321**  
Mobile: **07879 494 685**

*Great service for*  
**30** years



# J&J DRAKE



## Fully approved electrical contractor

- All Work Certificated in Accordance with NICEIC
- Free no obligation quotations
- All aspects of electrical work undertaken such as re-wires, Periodic test and inspections, maintenance calls, New build Installations.
- However small you may consider your job it will be treated with the same attention to detail as every one of our jobs.

## Your Local Electrician

Unit 24, Hall Barn Road Industrial Estate, Isleham, Ely, Cambs. CB7 5RJ  
 Contact us on: 01638 781567 / enquiries@jandjdrake.co.uk



## N.C.S.

**BRUSH ELECTRIC SWEEP  
 ALL CHIMNEYS SWEPT**

- BIRDS NESTS REMOVED
- OIL & GAS BOILERS
- SOLID FUEL, STOVES FITTED
- SMOKE PRESSURE TESTING
- INSECT MESH, POTS, COWLS
- FLUE LINERS SUPPLIED & FITTED
- BIRD GUARDS & TERMINAL FITTED
- GUTTERS CLEANED & REPAIRED
- GENERAL PLUMBING WORK

**FOR FREE QUOTE CALL  
 07824 727277 or 01638 662760**

EMAIL  
**NCS.NEWMARKET@YAHOO.CO.UK**  
 WEBSITE  
**www.ncsnewmarket.co.uk**

\*Send text or e-mail for 10% discount  
 Answers within an hour. • Waiting time approx. 1-2 weeks

**VERY CLEAN • Public liability insurance  
 - Competitive rates -**

*The Lake District - Eden vale*



## HOLIDAY COTTAGE

Nr. Penrith Cumbria CA10 1QW  
 AVAILABLE ALL YEAR ROUND

Immaculate and well-equipped modern holiday house, sleeps six, full central heating, double glazing and double garage.

Our holiday home offers every comfort, a real 'home from home' at reasonable rates, in a lovely village location with panoramic views.

**T: 01638 741926 or 741354  
 M: 07519 493664  
 for details**

All weeks £325.00



- ✓ Over 30 Years of Mobility Experience
- ✓ 100's of Items in Stock for Same Day Collection or Delivery
- ✓ Occupational Therapist on Site
- ✓ Test Drives & More
- ✓ Zero Pressure Guarantee
- ✓ Assessments in our Centre or Your Home
- ✓ Outstanding Aftercare, Warranties, Repair, Service & Hire

Scooters • Wheelchairs • Beds • Recliners • Walking Aids  
Living Aids • Stairlifts • Ramps • Personal Care

Call Now On  
01353 653 753

info@fenmobility.com  
www.fenmobility.com

Fen Mobility Centre  
Unit 5c Lancaster Way Business Park  
Ely CB6 3NW



## TIM PHILLIPS & Co. Accountants

Independent, specialist service for:  
**Small Business • Self Assessment  
Personal Taxation**

Free initial consultation – no obligation  
**EASY, FREE PARKING**

Copley Hill Business Park, Cambridge Rd., Babraham  
*Off A1307 between Wandlebury and Babraham*

**Tel: 01223 830044. [www.tpaccounts.co.uk](http://www.tpaccounts.co.uk)**

# ARCHITECTURAL DRAWINGS

FOR

PLANNING & BUILDING REGULATION APPLICATIONS

NEW PROPERTIES, EXTENSIONS, LOFT CONVERSIONS ETC

CONTACT US now to arrange a FREE on-site meeting at your convenience to discuss your project.

## ELY DESIGN GROUP

*'Architecture by Professionals'*

[www.elydesigngroup.co.uk](http://www.elydesigngroup.co.uk)

01353 649649

[mail@elydesigngroup.co.uk](mailto:mail@elydesigngroup.co.uk)

## STEPWISE FOOTCARE



### *Clinic-based Podiatry*

ALONGSIDE GENERAL FOOTCARE WE OFFER A RANGE OF SPECIALIST TREATMENTS INCLUDING:

- *Children's foot problems*
- **Lunula Laser™** fungal nail treatment
- **Swift Microwave** for verrucas
- *Biomechanical assessments*
- **MotionMetrix** gait and running analysis
- **SIDAS** bespoke orthotic insoles
- *Diabetic foot care*
- *Nail and minor skin surgery*
- **Wilde-Pedique** toenail reconstruction

**Tel: 01638 741973**

HCPC Registered | RCoP Accredited Practice  
[stepwise-footcare.co.uk](http://stepwise-footcare.co.uk)

Unit 1, 10 Ness Road, Burwell, Cambridge CB25 0AA

## The Upholstery Barn



- Fulbourn-based upholsterer offering traditional and modern reupholstery, repairs and re-covers
- Bespoke Curtains, Roman blinds and soft furnishings

### Contact:

Anne McGarvey  
T: 07986027807

E: [camupholsterybarn@outlook.com](mailto:camupholsterybarn@outlook.com)  
[www.theupholsterybarn.co.uk](http://www.theupholsterybarn.co.uk)



# My Village Handyman Services Ltd

- DIY Repairs & Odd Jobs
- Painting & Decorating
- Tiling & Flooring
- Gardening & Landscaping
- Patios & Decking
- Fencing, Sheds + Garden Studios
- Kitchen & Bathroom Installation
- Gutter Clear and Jet Washing
- Leaking Taps & Plumbing Jobs
- Carpentry & Repairs
- Light Fittings, Sockets & Electrical Works
- Studio & Summer House Builds
- Brickwork & Small Builds
- New Doors or Locks
- Security & Garden Lighting



**If your job is not listed, get in touch I'm sure we can help**  
Free no obligation quotes and advice provided  
Your very local Handyman

Contact us to arrange a visit or quote

Call: **07500876376** or **01223 881700**

Email: [info@myvillagehandyman.com](mailto:info@myvillagehandyman.com) Web: [myvillagehandyman.com](http://myvillagehandyman.com)

# K.J.P.

## Building/Maintenance



Including:

Design, landscapes, patios, fencing,  
gardening, decking, painting,  
decorating, tiling, all interior work,  
etc.

Tel: 01223 812021 or  
mobile 07799 504043



## SANICLEAN

DRAIN & PLUMBING SERVICES

**R. BRISTLEY** Est. 1974

9 Collings Place, Newmarket

- *Drains Unblocked Fast*
- *Toilets, Baths and Sinks*
- *Guttering and Downpipes*
- *Drain repairs and CCTV Surveys*
- *High Pressure Water Jetting*
- *Domestic and industrial*
- *All Work Guaranteed*

Newmarket (01638) 662439

Mobile 07970 038404

[www.rbristley.co.uk](http://www.rbristley.co.uk)



## Driveway & Landscaping Specialists

AWARD WINNING DRIVEWAY INSTALLERS

Resin Bound & Block Paving Specialists

*Our areas of expertise include:*

**All Driveways, Block Paving & Resin • Driveways Cleaning & Sealing**

- **Patios & Paths • Fencing • Drainage • Turfing & Seeding**
- **Artificial Grass • Site & Garden Clearance (Licenced)**
- **Grab Hire & Plant Hire • All Aggregates Delivered**

All paving work comes with a 5yr min Guarantee

Call for **FREE** estimates and bookings:

Please visit our websites for examples of our work & refs:

Office: 01638 721893 or Site: 07789 261266

Newmarket, Cambridge and Ely

[www.amsealtd.com](http://www.amsealtd.com)



**BRADSTONE**  
Assured

BrettApproved  
PAYING EXPERTS YOU CAN TRUST



[amsaggregates.co.uk](http://amsaggregates.co.uk)

**[cambridgedrivewaysandgardens.co.uk](http://cambridgedrivewaysandgardens.co.uk)**

# *'Your Friendly, Local Wood Burning Stove Specialist'*



## VISIT OUR SHOWROOM!


**Whitelands Farm  
Newmarket Road  
Bottisham  
Cambridge  
CB25 9BD**

*Sunday – Closed  
Monday – Closed  
Tuesday – Closed  
Wednesday – Closed  
Thursday – Closed  
Friday – Appointment only  
Saturday – 10.30 – 12.30pm\**

*(\*Saturday opening September to  
April only  
appointment only during  
other months)*

*Please phone to check for  
any changes  
or closures during school holidays*

Email & telephone enquiries dealt  
with Monday – Friday 9am – 5pm

 01223 703184

Email: [sarah@cambridgestoves.co.uk](mailto:sarah@cambridgestoves.co.uk)

CALL NOW FOR YOUR FREE, NO  
OBLIGATION SURVEY AND  
QUOTATION, OR MAKE AN  
APPOINTMENT TO VISIT OUR  
SHOWROOM

ALL ASPECTS OF BUILDING WORKS  
TO YOUR FIREPLACE UNDERTAKEN

FAST, RELIABLE AND EFFICIENT  
SERVICE CARRIED OUT BY  
QUALIFIED HETAS ENGINEERS

LARGE SELECTION OF WOOD  
BURNING STOVES ON DISPLAY

**NOW SELLING SEASONED  
FIREWOOD!!**



**BOTTISHAM COMMUNITY  
LIBRARY ASSOCIATION**

**LIBRARY OPENING HOURS**

TUESDAYS

3.00-5.00 and 6.00-8.00

WEDNESDAYS

10.00-11.30

THURSDAYS

3.00-5.00

FRIDAYS

6.00-8.00

SATURDAYS

10.00-12.00am

*Working in Partnership with the  
County Library Service.*



**Need a little extra  
Financial Help?**

**We don't have a magic money  
tree, but we may be able to help!**

**BOTTISHAM LOCAL CHARITIES**

**\*Bottisham Local Charities can offer  
support to people with a minimum of  
two years residence in the village**

**For further information or an  
application form contact the Clerk:  
bottishamlocalcharities@gmail.com**

**01223 813774 or 0792 042 5154**



**Bottisham  
Parish  
Council**

Serving Residents  
Supporting the Community

**BOTTISHAM PARISH COUNCIL**

**Address:** 41 Stow Road, Stow Cum Quy, Cambridge CB25 9AD

**Email:** clerk@bottisham-pc.gov.uk

**Telephone:** 07369 248 998

**Clerk:** Sam Chambers-Turner

**Chair:** Nadene Cundell

**Vice Chair:** Jon Ogborn

**Parish Councillors:**

Robert Crida, Savannah Laurent, Keith Morrison, Steven O'Dell, Rehana Shaker,  
Maria Socea, Jawahar Swaminathan

**Parish Website:** \_\_\_\_\_ [www.bottisham-pc.gov.uk](http://www.bottisham-pc.gov.uk)

**County Councillor:** Jonny Edge: \_\_\_\_\_ [jonny.edge@cambridgeshire.gov.uk](mailto:jonny.edge@cambridgeshire.gov.uk)

**District Councillors:** Charlotte Cane: \_\_\_\_\_ [charlotte.cane@eastcambs.gov.uk](mailto:charlotte.cane@eastcambs.gov.uk)

John Trapp: \_\_\_\_\_ [John.trapp@eastcambs.gov.uk](mailto:John.trapp@eastcambs.gov.uk)

## Useful Information

<b>Bottisham Website:</b> .....	www.bottisham-pc.gov.uk
<b>Parish Council Chairman:</b> Nadene Cundell	
<b>Parish Council Clerk:</b> Sam Chambers-Turner, clerk@bottisham-pc.gov.uk .....	07369 248998
<b>Holy Trinity Church:</b> Vicar: Rev. Max Osborne max9@btinternet.com .....	01223 481187
Churchwarden: Stuart Field .....	01223 604019
<b>Roman Catholic Priest:</b> Monsignor Eugène Harkness. Parish of St Philip Howard ...	01223 211235
<b>Bottisham Surgery:</b> Enquiries and Appointments .....	810030
Out of Hours only - Urgentcare Cambridge .....	111
<b>Bottisham Library:</b> Library hours, <i>see advert previous page</i> .....	01223 812354
<b>Cambridgeshire Police HQ:</b> .....	01480 456111
<b>Cambridgeshire Police:</b> (NON-URGENT MATTERS) .....	ring 101
In EMERGENCIES .....	ring 999
<b>Local East Cambs Policing info:</b> www.cambs.police.uk/Neighbourhood-Policing/East-Cambs	
<b>NAAFI Break:</b> Gary Fairbairn .....	korum694@gmail.com
<b>Neighbourhood watch co-ordinator:</b> kevin.g.evans@ntlworld.com .....	01353 614892
<b>Bottisham Pharmacy:</b> .....	812321
<b>Bottisham Community Sports and Social Club:</b> Secretary Bev Clowes, Bottishamcscas@gmail.com .....	812063
<b>Bottisham Community Primary School:</b> .....	811235
<b>Bottisham Village College, School:</b> .....	811250
Evening Classes, Clubs and Youth Club Information .....	811372
<b>Bottisham W.I.:</b> Secretary - Jenn White • mrandjw@btinternet.com .....	811600
<b>Bottisham Scout Group:</b> Group Contact: Linda Jones .....	813040
<b>1st Bottisham Rainbows/1st Bottisham Brownies:</b> Kay Pearce .....	811055
<b>Girlguiding Bottisham District:</b> Cambs County office • www.cambseastguides.org.uk ..	01223 813917
<b>Bottisham &amp; District Gardening Club:</b> Secretary: Julia Green .....	811467
<b>Bottisham Bowling Club:</b> Peter Clowes, Sec., bottishambowlingclub@gmail.com ...	07756 431234
<b>Bottisham Carpet Bowls Club:</b> Nora Watson, nora@gandnwatson.uk .....	812121
<b>Bottisham Cricket Club:</b> Chairman: Will Allen, Chairman@bottlodecricquet.co.uk ...	07713 007757
<b>Bottisham Youth Football Club:</b> Adam Bridgland, adambridgland@hotmail.com ...	07764 488599
<b>Bottisham Local Charities Trustees:</b> secretary - Jonathan Barrett .....	07920 425154
<b>Bottisham Pool Association:</b> Manager - Jenn Jamieson .....	811121
<b>Queen's Court Day Centre:</b> .....	811905
<b>East Cambridgeshire District Offices:</b> .....	01353 665555
<b>East Cambridgeshire District Councillors:</b>	
Charlotte Cane, 34 Swaffham Road, Reach .....	07976 607512
John Trapp, 104 Commercial End, Swaffham Bulbeck .....	01223 812120
<b>Cambridgeshire County Councillor:</b> Jonny Edge Jonny.Edge@cambridgeshire.gov.uk .....	Tel: 07974348141
<b>MP for Constituency:</b> Charlotte Cane, MP, charlotte.cane.mp@parliament.uk	
<b>Cambridgeshire Trading Standards Helpdesk:</b> .....	0845 3030666
<b>Milton Road Tip:</b> Apr to Sept – Weekdays 9.00am-8.00pm: Weekends 9.00am-6.00pm .....	860674
Oct to Mar - 9.00am-4.00pm	
<b>CRESSET Editor:</b> email: BottishamCresset@gmail.com	
Treasurer, Advertising rates and payment: Rhona Walker, 94 High St ...	811402
Distribution: Ian & Helen Cole .....	812573
<b>Design/Artwork:</b> ONG (Old Newton Graphics) • www.codge.com .....	01449 675548
<b>Printing:</b> Falcon Printing Services, www.falconprinting.co.uk, jason@falconprintingservices.com .....	891286

**The Cresset:** While every effort is made to ensure accuracy we cannot accept liability for any mistakes or misprints. The views of, or any opinions expressed, are not those of the EDITOR. The Editor cannot accept any responsibility for statements made in advertisements

# The Cambridge Bath Co.

*Exquisite bathroom transformations*



56 High Street  
CB25 9DA



# E.C. AUTOCARE

(Est. 1980)



**SERVICING & REPAIRS**  
**Cars & Light Commercial**  
**Diesel & Petrol**



## MOT TESTING STATION

**Servicing to all makes of Cars  
& Light Commercial**

- ENGINE MANAGEMENT DIAGNOSTICS**
- TYRE - BRAKES - EXHAUSTS**
- AIR CONDITIONING SERVICING**
- GEARBOX SPECIALISTS** MANUAL & AUTOMATIC

**FAST, FRIENDLY, FAMILY BUSINESS**

**AI303 SERVICE STATION, BOTTISHAM**  
**(behind Brian McKay)**

**Tel.01223 811122 or 01223 812357**

