

Annual Parish Meeting

**Tuesday
29th April
7:30pm**

**Sports
&
Social Club**

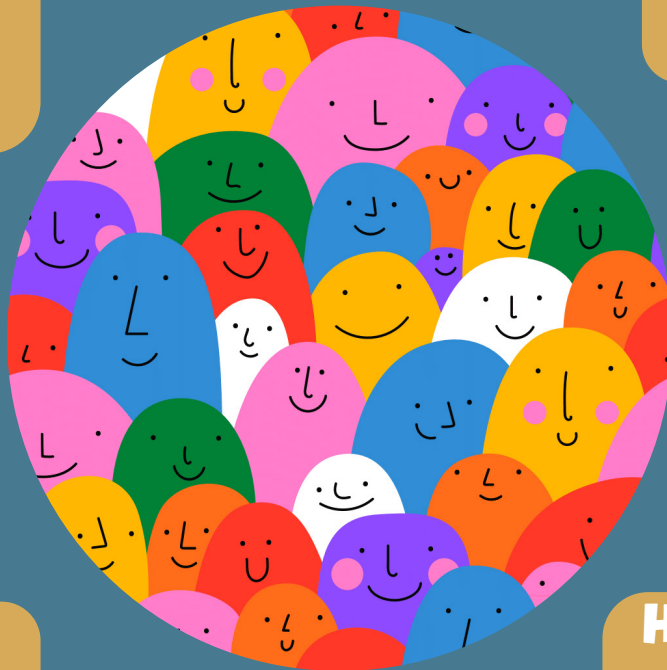
**Are there plans for
amenity
improvements?**

**What
projects are
going on in the
village?**

**Can we have
a play area?**

**How do we
know about
planning
applications?**

**Can we plant
bulbs in the
village?**



**Where does
my Council tax
money go?**

**How do we voice
concerns about
Bottisham like
graffiti, verges,
potholes?**

**What's being
done about roads
& parking?**

**Come along
and ask us
anything
from transport to
environment to
planning to
community initiatives.**

**How do I contact
Parish Council?**

**Whether you've lived here years or just months,
we would love to see you.**

clerk@bottisham-pc.gov.uk